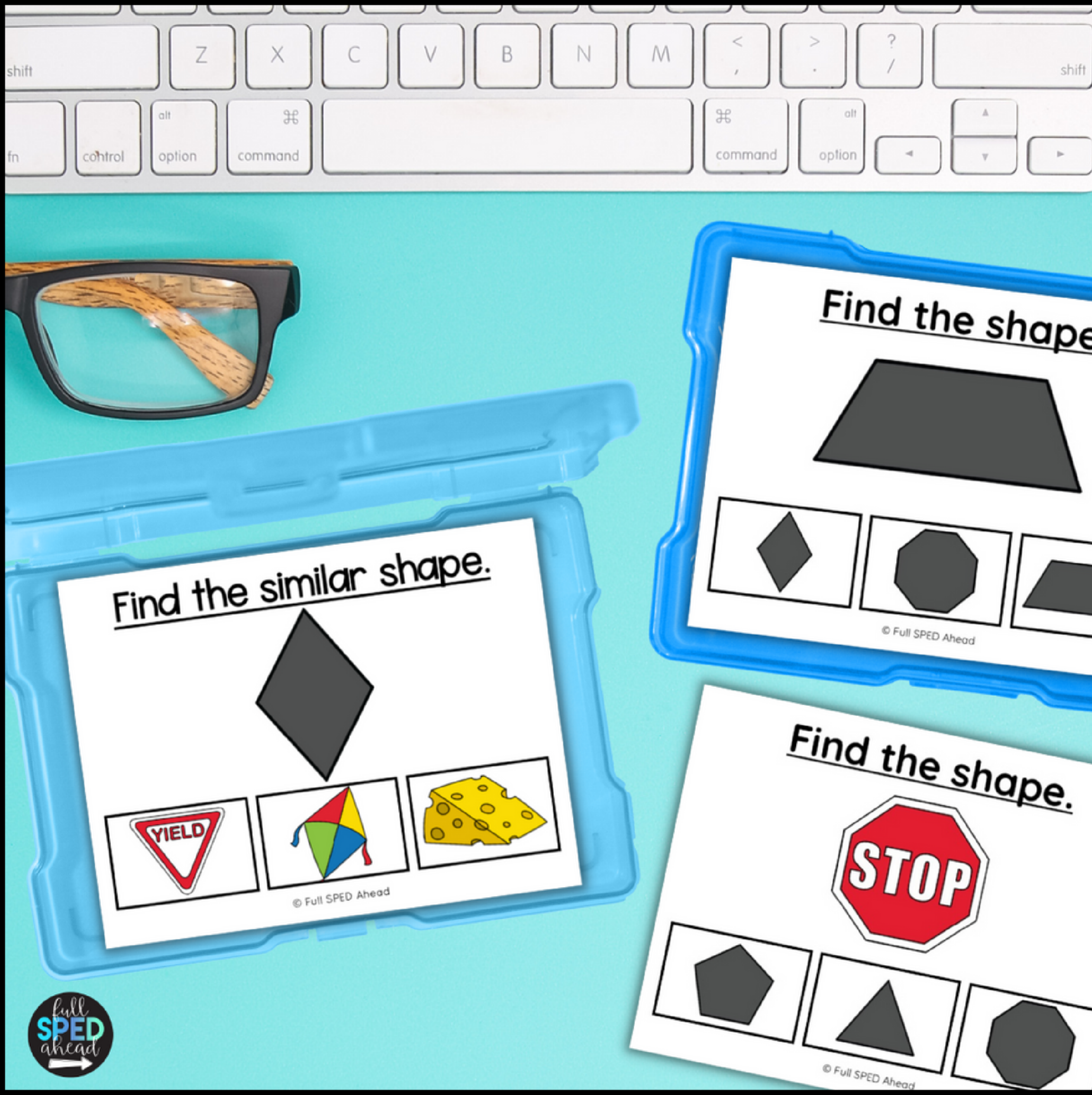


Check this out!

Use this in your special education classroom to teach math geometry skills with 2D shapes identification!



Why?

2D Shapes Task Cards



Models start & stop task completion



Students can show understanding



Promotes independent work



What is included in this resource?



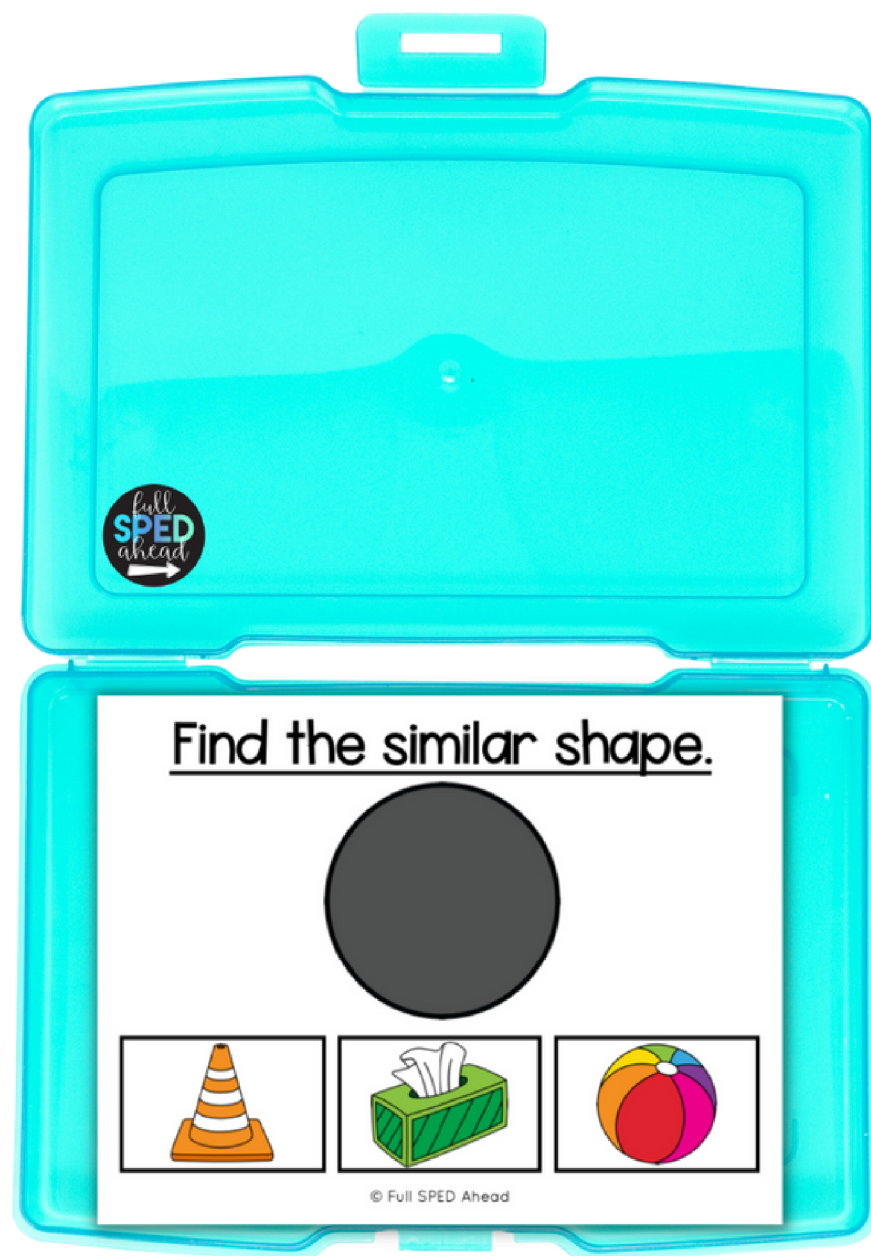
- 5 sets
 - Errorless
 - Identical Match
 - Non-Identical Match
 - Word to Picture Match
 - 2D to 3D Shapes Match

How can I use this resource?

- ① Use for morning work, independent centers, small groups, down time or whole group instruction
- ② Put in student IEP binders or bins for data tracking
- ③ Students use a clothes pin, circle with a marker, point to or use a mini eraser to select answers



EASY PREP



Print the full set for your students & laminate for multiple uses for the entire school year and beyond!

I highly suggest using 5mil lamination

Check out what other teachers have said:

This is helpful for my students to be able to recognize shapes similar to it on the same page. - Janet

My students enjoy this resource because it's easy to use, which makes it really convenient for them during stations - Jessica



Did you see the bundle?



Click to
check it out!